

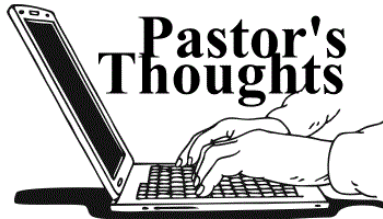
# The Sampler

Co-Editors  
Barb Stein  
rstein01@atlanticbb.net  
Britt Dolly  
abrittd@gmail.com



## Inside this issue:

Session Highlights	2
Ice Cream Social/ Picnic	2
Choir News	3
Prayer Concerns	3
Youth Feature	4
Holy Cow Consulting	4



## A New Path, Maybe

*Trust in the LORD with all your heart, and do not rely on your own understanding. In all your ways acknowledge him, and God will make straight your paths. Proverbs 3:5-6*

Last month's Pastor's Page ended with: God is working hard to make my path straight! Please continue on the journey to fulfill **God's** will!

The path MAY move in a new direction. The direction will depend on the participation of **everyone** associated with Romney Presbyterian Church. Please read the article on page 4 about Holy Cow Consulting and the CAT – Church Assessment Tool. The Romney Holy Cow task force will be finalizing the questions included in the customized CAT and then publicizing the request for your input.

The CAT will be available on-line or on paper. You will be asked about one hundred questions about your perceptions, expectations, and dreams for this particular church. Fifteen years ago, after Dr. Franklin left, small group work resulted in the Mission Study as a vision and guide for future ministry in this church. It is still on the church website with the details of goals and objectives. The path it provided needs to be updated.

With the CAT, individual anonymous data will be collected and compiled. The session and the Holy Cow task force will meet with a trained interpreter to review what YOU (hopefully!) have said about the church. Then the results will be shared with everyone to consider the path for the future.

The CAT is a specially crafted but still mostly multiple choice data collection. Because many reasons for being part of the Romney Presbyterian family require more detail, over the next several Sundays, you will have opportunity to respond individually. The written submissions will be compiled anonymously and also used in discerning God's will. If you miss a week of worship and would like to participate, look for the little slips of paper in the vestibule to be completed and put in the offering plate.

If you have a specific topic or question for a Sunday morning reply, please call the church office.

This church is part of the body of Christ as are all believers. Please be in prayer about God's will for this particular church in the future. Share your hopes and dreams as we continue on this wonderful journey with our Lord!

*Pastor Barb*



Thanks go to Britt Dolly for graciously volunteering to be a co-editor of our Sampler. Being a senior at Hampshire High School this year, he will be able to provide information from a younger point of view concerning our congregation and community. We're excited to have Britt on our Sampler Team!

## NEWS FROM THE SESSION

- Session approved appropriating \$149.27 from the General Memorial Fund to complete the sidewalk project. Session approved our participation in the CAT program and using \$415.00 of the C & W Outreach Mission money to fund the program.
- Session approved repairs to the entrance of the Fellowship Hall, finishing the exterior of the dormer in the upstairs bathroom, and replacing the gutter above the dormer window at a cost of \$565.00 by David Cannon.
- Session approved the Nominating Committee recommendation of :
  - Elders Class of 2017 (Michael Coleman, Beverly Keadle, Vida Simon and John Dan Sitar)
  - Elders Class of 2016 empty chair to be filled by Patricia Taylor
- Session approved September 20 as Congregational Meeting to elect elders.
- Session approved Vida Simon representing the Congregation at the Presbytery meetings on August 22 and November 10, 2015.
- Session approved receiving into membership by profession of faith Kimberly Ann Smith.
- Session authorized the baptism of Ariel Grace Smith and Alexander James Smith, children of Kimberly Ann and James Patrick Smith at St. Luke Chapel on Sunday, August 16, 2015.
- Session approved the request of Gary Smith to be married to Nancy Quinnlan at St. Luke Chapel on Saturday, September 19, 2015. Officiate to be Rev. Leo Smith, brother of the groom.

## YEAR-TO-DATE FINANCIAL REPORT

Offering = \$73,034.01 Total Expense = \$69,625.26 From Trust Fund = \$1,000

## MEMORIAL GIFT

In Memory of Ray Mayhew



**Sunday, September 20, 2015**  
**Church Fellowship Hall**  
**5:00 p.m.**

Come and celebrate the beginning of the new school year and the end of the summer season at our Annual Ice Cream/Picnic Social. Please be here at the church by 3:30 p.m. if you want to help make homemade ice cream or you can make it at home and bring it to share with others. **Please let the church office know if you are providing homemade ice cream.** The church will provide hamburgers, hot dogs, and condiments, so please bring along a favorite snack, chips, etc. to share. Guests are welcome to attend this time of fellowship, food, and fun. **BRING A FRIEND.....**



**Here's  
the  
Scoop!**



The PW Afternoon Circle, AKA; *Brown Baggers* will lunch and learn on Tuesday, September 8th at noon in the church library.

The Evening Circle will be meeting at 6:30 p.m. on September 8th at the church with Nancy Bowman as the host and Mary Glenn having the Bible lesson.



For many, September is like starting a new year and what better way to start the “new year” than to join the Adult Choir. From the book, “The Power of Music” by Elena Manes, she discusses the therapeutic potential of music—how it may make people smarter, happier and even healthier”. Choir helps build **character**. People who sing in the choir give up one night a week and worship faithfully. These people have real character.

(Some members in the choir are real characters!) Choir makes you **healthy**. How often do you exercise your lungs? Your lungs are important to living. If you really want to enjoy living and be healthier, come and sing with us. Otherwise it won't be as much fun if you're not there. You'll miss many **opportunities** to offer God your expressions of praise and adoration. You'll sing **interesting** music. You'll hear interesting comments about singing. You'll meet some interesting characters. Your interest in worship will increase and grow as you prepare to participate in the next Sunday's worship. After a stressful day of decision-making — should I sell this, buy that, watch this, cook that — it will be so **relaxing** to have someone say to you, “Sing this”! **So please consider elevating your present state of being by joining the Adult Choir Wednesday, September 9th at 7:00 p.m.. God will love you and we will too.**

The **RPC JR. CHOIR** will begin practice for the new choir year bright and early at **9:00 a.m. on Sunday, September 27**. Miss Barb and I are looking forward to working with ages 4 to ????. Elementary to high school students are welcome to participate in the Jr. Choir. We meets every Sunday morning at 9:00 a.m. and practices until 9:45 a.m. We always begin with Vacation Bible School music and intertwine the year with hymns, old time favorites and some new songs. Throughout the year we add in musical instruments and sometimes even some creative sets. We sing the third Sunday of each month during the worship service.

Can't wait to see all your smiling faces and hear what you did this summer!

*Miss Sheri*

**PRAYER CONCERNS**

**Our members:**

Sympathy: family and friends of Betty Kline

Jim Baker, Janet Buckley, Diane Crane, Anne Hill, Sally Kuykendall, John and Margritt Mason, Beulah Mayhew, Linda Shriver, John and MagdaleneSitar

**Missionary Support:** Mark Hare in Haiti and Kristi Van Nostram in El Salvador

**Sympathy:** families and friends of Sherron Hampton, Kirby Knill, Esther Smallwood and Mary Susan Williams

**Also:** Gina Barricelli, Pat Bonar, Paul Borrer, Vaiden Bowen, John Bowers, Dona Brown, Cheryl Buck, Boyd Corbin, Elsa Culler, John Duncan, Sr., Joan Fleming, Linda Giles, Karina Gray, Vicki and Carl Haines, Mary Alice Bonar Hannah, Pat Hartman, Shirley Heavner, Tilden Hunt, Kitty Knill, Matt Krams, Junior Kuykendall, Alma Lear, MaryLou Mezzatesta, Virginia Michael, Dee Orndorff, Lexi Orndorff, Charlie Parsons, Maria Reppert, Chloe Rexroad, Landon and Nolan Rinker, Jeanne Buckbee-Robinson, Steven Rogers, Royce Saville, MaryAnn Spring Smith, Scott Sucke, Michael Terry, Joshua Wagner, Grant Walls, Addie Wood, Charlotte Wood

**Please provide the church office with updates when available to keep this list as current as possible.**



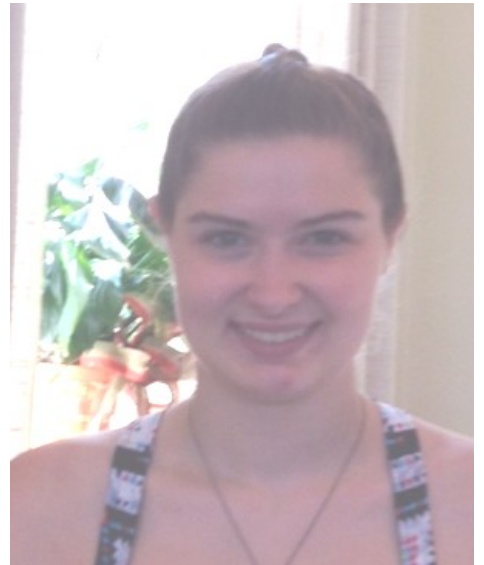
Our church has a very functional and diverse library. Look it over and check out books through an honor system as detailed on a library shelf. There are several inspirational, fiction and informative books to be found there. You will also find some FREE books.

Happy reading!



## Youth Feature- Katie Allen

Katie Allen is an active member of Romney Presbyterian Church. She is currently an upcoming sophomore and Hobart and William Smith Colleges and is doing very well. Katie says she had a great first year in college, although she had a lot to learn and adjust to. To her, the largest adjustment was learning to do homework appropriately; and a lot of it. Her roommate told her to finish her homework as soon as it was assigned and when she could in order to complete it. She says that this is the most valuable piece of information that she received upon starting college. Katie averaged about 150 pages of reading per night as well as questions and essays in the first semester. However, Katie says that homework is not all she did as there are many recreational activities and clubs in which she partook. She joined five clubs her first week of college, but she limited herself to two and a half so she would have time for her studies. Katie also did many college sponsored activities like making a stuffed animal, engraving a ring, and taking carriage rides. She says she had a great time because she went out of her dorm room, made new friends, and did her homework. She even made the Dean's List both semesters.



This summer Katie was a camp counselor and an AmeriCorps volunteer and Camp Horseshoe. The camp began with three weeks of training to get the volunteers ready followed by many weeks of children coming to the camps; all of a different age and background. The first two weeks of the camp were geared toward high schoolers, the third week toward middle schoolers, and the final four weeks toward younger kids aged 7-12. The young kids were Katie's favorite and where she learned the most. All of the children come from different backgrounds but Katie says that they all acted like young adults. Her favorite part about the camp was seeing these kids unwind and act their own age as the camp progressed.

Katie's prospects for the coming year include declaring her major and possibly minor(s) at Hobart and William Smith Colleges. She will also be a teaching colleague for a Freshman Seminar and plans to sign up for a study abroad program for spring 2017. Most importantly Katie is excited for her new year at college and all of its possibilities.

### From **Holy Cow Consulting:**

Leaders have an opportunity today that has not existed before in the history of the church: to listen to those they are called to lead and serve. In accordance with the command to be "quick to listen, slow to speak", leaders can now listen to an entire group rather than those who are simply the most vocal. We call this information **organizational intelligence (OI)**. OI offers leaders a comprehensive, three dimensional view of the church rather than a patchwork of opinions and guesses. Whether developing a vision for the church or managing a pastoral change, leaders consistently find their work more effective and more rewarding when it includes OI. We have been using OI to help church leaders make critical decisions for nearly 35 years. We have the experience of working with nearly 1,300 churches across the U.S., congregations of every size, setting, and type. We take pride in our ability to guide clients through an assessment process that is clear and effective using instruments developed especially for congregations. Our resource team includes seasoned veterans who have served effectively in church settings and are skilled at helping church leaders apply organizational intelligence to the challenges they face today.

The Congregation Assessment Tool (**CAT**) is the only reliable benchmarked instrument designed to provide an in-depth look at the experiences, perceptions and aspirations of a congregation. It is an essential step for any church in leadership transition or undertaking strategic planning.

The CAT is a customizable assessment instrument that can help the leadership:



- Measure the level of satisfaction and energy in the church.
- Identify the critical success factors for improving organizational climate.
- Discover where members would like to go in the future.
- Gauge readiness for change.
- Uncover potential resources that may be missing.

**Make your voice part of the conversation when the CAT is ready!!**

## Recipe of the Month

### Southwestern Chicken

4 boneless, skinless chicken breasts

1 jar medium salsa, divided

1 can black beans, drained and rinsed

1 can whole kernel corn (or mexican corn)

Mix corn, beans and half the jar of salsa in the crock pot.

Place chicken on top and coat with remaining salsa. Cook on low for 4-6 hours.

About 10 minutes before you eat, sprinkle with cheese and let melt.

Romney Presbyterian Church  
110 West Rosemary Lane  
Romney, WV 26757

*The Sampler*  
*September 2015*

Return Service Requested

Back issues of the Sampler are available on our Website [www.romneypresbyterianchurch.org](http://www.romneypresbyterianchurch.org).  
**Church Office Phone**—304-822-5083 **Email**-[office@romneypresbyterianchurch.org](mailto:office@romneypresbyterianchurch.org)